



2022 to 2023

COMMUNITY IMPROVEMENTS

NEW
STORAGE SHED
AT CREEKSIDE



CONSTRUCTION COMPLETED



BEFORE IMPROVEMENTS

SHED IMPROVEMENTS AT PUMP HOUSE FACILITY



IMPROVEMENTS COMPLETED

SHED IMPROVEMENTS AT PUMP HOUSE FACILITY



REPLACEMENTS COMPLETED

STREETLIGHT REPLACEMENTS ON SAND PINE



REPLACEMENTS COMPLETED

STREETLIGHT REPLACEMENTS ON THE ESPLANADE

STREETLIGHT
REPLACEMENT
ON
OWLS ROOST
CENTER ISLAND



REPLACEMENT COMPLETED



IMPROVEMENTS IN-PROGRESS



IMPROVEMENTS COMPLETED

STREETLIGHT PAINT IMPROVEMENTS



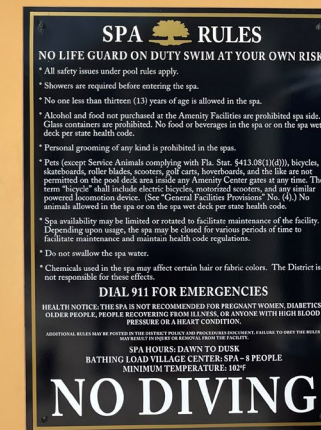
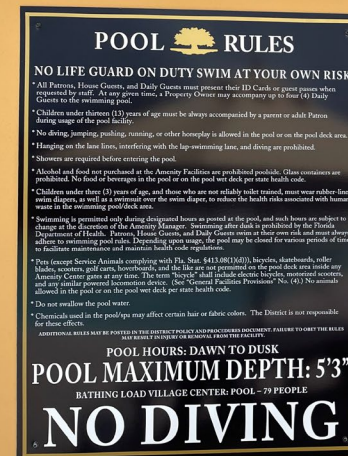
REPLACEMENTS COMPLETED

CREEKSIDE SIGN REPLACEMENTS



REPLACEMENTS COMPLETED

CREEKSIDE SIGN REPLACEMENTS



REPLACEMENTS COMPLETED

VILLAGE CENTER SIGN REPLACEMENTS



REPLACEMENTS COMPLETED

VILLAGE CENTER SIGN REPLACEMENTS



REPLACEMENTS COMPLETED

COMMUNITY SIGN REPLACEMENTS



REPLACEMENTS COMPLETED

COMMUNITY SIGN REPLACEMENTS



REPLACEMENTS COMPLETED

COMMUNITY SIGN REPLACEMENTS



REPLACEMENTS COMPLETED

COMMUNITY SIGN REPLACEMENTS

STREET SIGN REPLACEMENTS



REPLACEMENTS COMPLETED



IMPROVEMENTS COMPLETED

VEHICLE TRAFFIC – SPEED CONTROL
IMPROVEMENTS

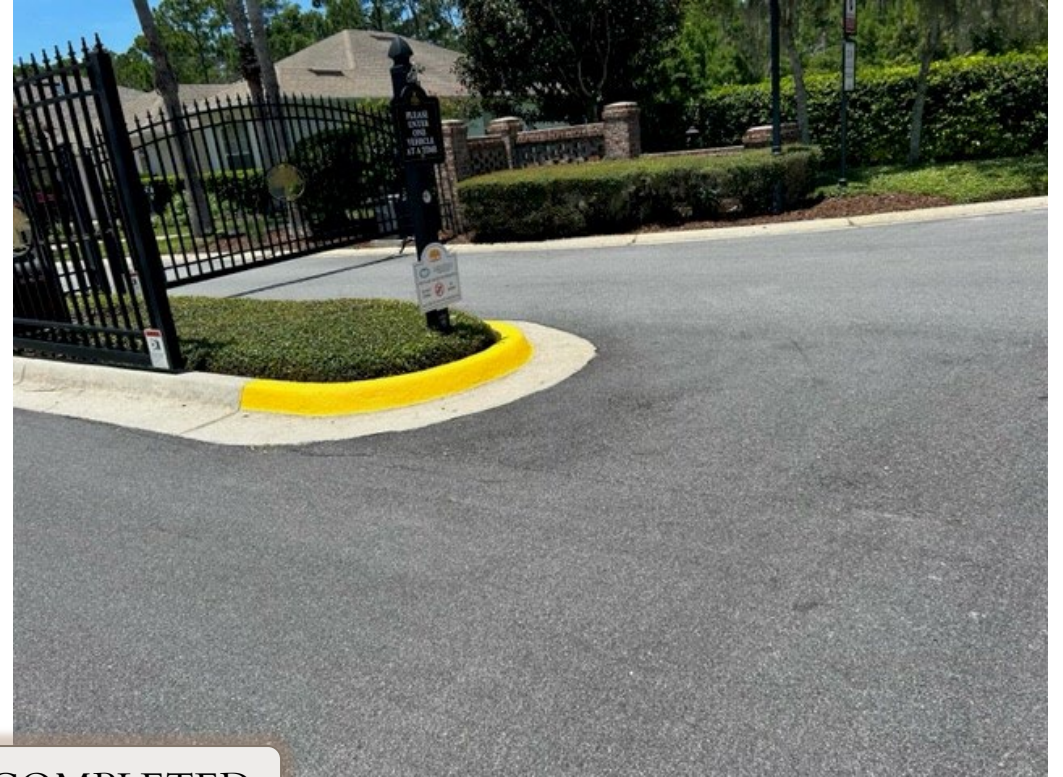
NORTH GATE



IMPROVEMENTS COMPLETED

VEHICLE TRAFFIC – SPEED CONTROL
IMPROVEMENTS

WILD OAKS ENTRANCE



IMPROVEMENTS COMPLETED

VEHICLE TRAFFIC – SPEED CONTROL
IMPROVEMENTS

THE CROSSINGS EXIT



IMPROVEMENTS COMPLETED

VEHICLE TRAFFIC – SPEED CONTROL
IMPROVEMENTS

SOUTH GATE EXIT



PROJECT COMPLETED

CROSSWALK SAFETY PROJECT



PROJECT COMPLETED



CROSSWALK SAFETY PROJECT



REPAIRS COMPLETED

WILD OAKS ASPHALT REPAIRS



REPAIRS COMPLETED

WILD OAKS ASPHALT REPAIRS



BEFORE REPAIRS



REPAIRS IN-PROGRESS



REPAIRS COMPLETED

CURB & GUTTER REPAIRS ON WATERSIDE PARKWAY



BEFORE REPAIRS



REPAIRS IN-PROGRESS



REPAIRS COMPLETED

CURB & GUTTER REPAIRS ON WATERSIDE PARKWAY



REPLACEMENT IN-PROGRESS



REPLACEMENT COMPLETED

SIDEWALK REPLACEMENT
ON RIVERFRONT DRIVE



REPLACEMENT COMPLETED

SIDEWALK REPLACEMENT
ON RIVERBEND DRIVE

CONCRETE POUR
ON RIVERBEND DRIVE





REPLACEMENT IN-PROGRESS

SIDEWALK REPLACEMENT
ON JASMINE DRIVE



REPLACEMENT IN-PROGRESS

SIDEWALK REPLACEMENT ON JASMINE DRIVE



REPLACEMENT COMPLETED

SIDEWALK REPLACEMENT ON JASMINE DRIVE

SIDEWALK REPLACEMENT ON JASMINE DRIVE





BEFORE REPAIRS



REPAIRS COMPLETED

ENTRANCE OF ESPLANADE
REPAIR



BEFORE REPAIRS



REPAIRS COMPLETED

FRONT STREET PAVERS
REPAIR



CONSTRUCTION IN-PROGRESS

CENTER PARK PATIO AT GAZEBO



CONSTRUCTION IN-PROGRESS

CENTER PARK PATIO AT GAZEBO

CENTER PARK PATIO
AT GAZEBO



CONSTRUCTION COMPLETED



REPLACEMENTS COMPLETED

DRINKING FOUNTAIN REPLACEMENTS



INSTALLATION COMPLETED

POND 24 AERATOR



INSTALLATION COMPLETED

POND 11 AERATOR



BEFORE REPLACEMENTS



REPLACEMENTS TO BE COMPLETED

THE CROSSINGS
MAILBOX REPLACEMENTS
IN PROGRESS



BEFORE REPLACEMENTS



REPLACEMENTS TO BE COMPLETED

THE CROSSINGS
MAILBOX REPLACEMENTS
IN PROGRESS



BEFORE ENHANCEMENT

CREEKSIDE LANDSCAPE ENHANCEMENT



ENHANCEMENT IN-PROGRESS

CREEKSIDE LANDSCAPE ENHANCEMENT



ENHANCEMENT COMPLETED

CREEKSIDE LANDSCAPE ENHANCEMENT

CREEKSIDE
LANDSCAPE
ENHANCEMENT



BEFORE ENHANCEMENT

CREEKSIDE
LANDSCAPE
ENHANCEMENT



ENHANCEMENT IN-PROGRESS

CREEKSIDE
LANDSCAPE
ENHANCEMENT



ENHANCEMENT COMPLETED



BEFORE ENHANCEMENT



ENHANCEMENT COMPLETED

CREEKSIDE LANDSCAPE ENHANCEMENT



BEFORE ENHANCEMENT



ENHANCEMENT COMPLETED

CREEKSIDE LANDSCAPE ENHANCEMENT



BEFORE ENHANCEMENT



ENHANCEMENT COMPLETED

CREEKSIDE LANDSCAPE ENHANCEMENT



ENHANCEMENT IN-PROGRESS



ENHANCEMENT COMPLETED

CREEKSIDE LANDSCAPE ENHANCEMENT



BEFORE IMPROVEMENTS

SAND PINE ISLANDS
LANDSCAPE IMPROVEMENTS



IMPROVEMENTS COMPLETED

SAND PINE ISLANDS
LANDSCAPE IMPROVEMENTS



BEFORE IMPROVEMENTS



SAND PINE ISLANDS
LANDSCAPE IMPROVEMENTS



IMPROVEMENTS COMPLETED

SAND PINE ISLANDS LANDSCAPE IMPROVEMENTS



BEFORE ENHANCEMENT



ENHANCEMENT COMPLETED

ANNUALS
AT LINKSIDE WEST



BEFORE ENHANCEMENT



ENHANCEMENT IN-PROGRESS



ENHANCEMENT COMPLETED

LANDSCAPE ADDITIONS IN GRANDVIEW



MOWING COMPLETED

FIREWISE MOWING



INSTALLATION COMPLETED

NEW SOD
IN EGRET



IMPROVEMENTS COMPLETED

BERM PLANTING IMPROVEMENTS
AT EGRET



BEFORE RESTORATION



RESTORATION IN-PROGRESS

FACILITATOR PODIUM RESTORATION



RESTORATION COMPLETED

FACILITATOR PODIUM RESTORATION

VILLAGE CENTER
LOCKER
IMPROVEMENTS



IMPROVEMENTS COMPLETED

GRAND HAVEN
ROOM
NEW MICROPHONES
IN PROGRESS



INSTALLATION TO BE COMPLETED



INSTALLATION COMPLETED

NEW CAMERAS
AT THE VILLAGE CENTER PARKING LOTS



BEFORE UPGRADES



UPGRADES TO BE COMPLETED

VILLAGE CENTER
POOL FURNITURE UPGRADES
IN PROGRESS



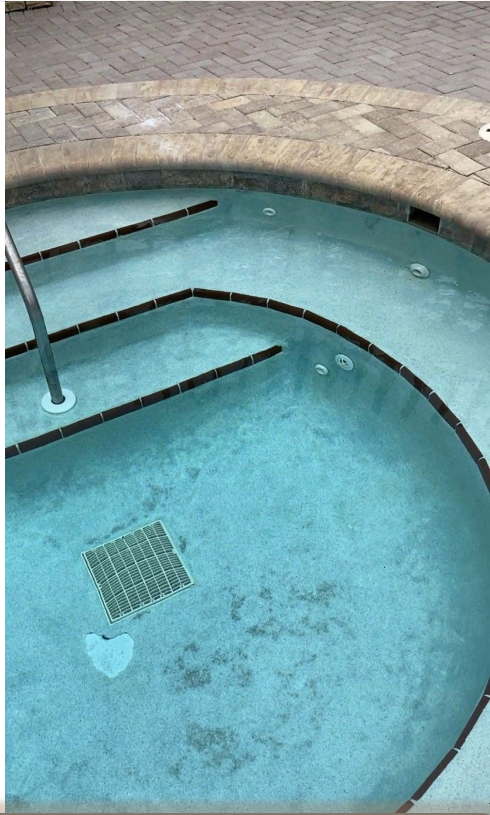
BEFORE UPGRADES



UPGRADES TO BE COMPLETED

VILLAGE CENTER POOL FURNITURE UPGRADES IN PROGRESS

* DAMAGED WAVE SLAT SEGMENTS IN CHAISES WILL ALSO BE REPLACED *



BEFORE RESURFACING



RESURFACING COMPLETED

VILLAGE CENTER
SPA RESURFACING



INSTALLATION COMPLETED

TENNIS COURT WINDSCREENS



UPGRADES COMPLETED



BATHROOM FAUCET AND SOAP DISPENSER UPGRADES

CREEKSID
POOL HEAT
PUMPS



INSTALLATION COMPLETED



IMPROVEMENTS COMPLETED

CREEKSIDE
EXTERIOR PAINTING IMPROVEMENTS



BEFORE REPLACEMENT



REPLACEMENT COMPLETED

CREEKSIDE CARPET REPLACEMENT

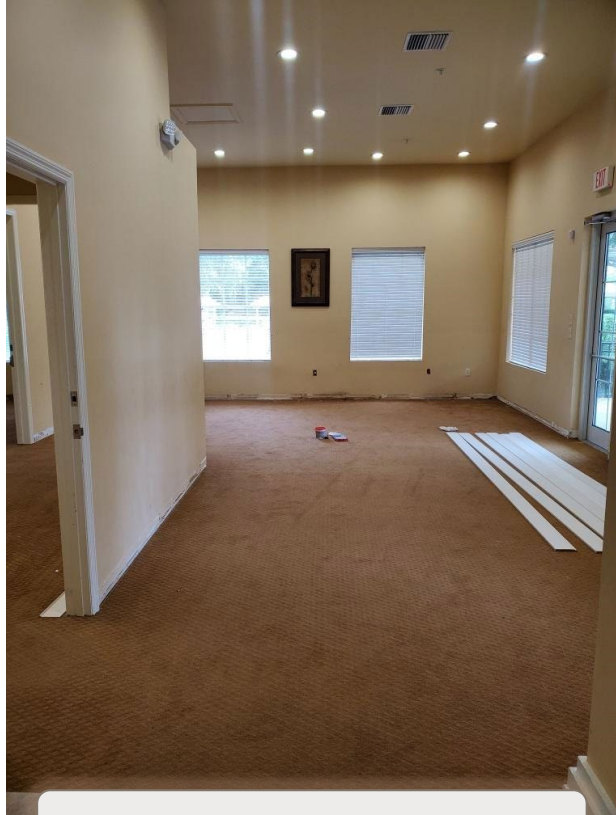


BEFORE REPLACEMENT



REPLACEMENT COMPLETED

CREEKSIDE CARPET REPLACEMENT



BEFORE REPLACEMENT



REPLACEMENT COMPLETED

CREEKSIDE CARPET REPLACEMENT



IMPROVEMENTS IN-PROGRESS

CREEKSIDE
INTERIOR PAINTING IMPROVEMENTS



IMPROVEMENTS COMPLETED

CREEKSIDE
INTERIOR PAINTING IMPROVEMENTS



TIKI BAR IMPROVEMENTS



BEFORE IMPROVEMENTS



TIKI BAR IMPROVEMENTS



BEFORE IMPROVEMENTS



TIKI BAR IMPROVEMENTS



IMPROVEMENTS COMPLETED

TIKI BAR IMPROVEMENTS



IMPROVEMENTS COMPLETED

TIKI BAR IMPROVEMENTS

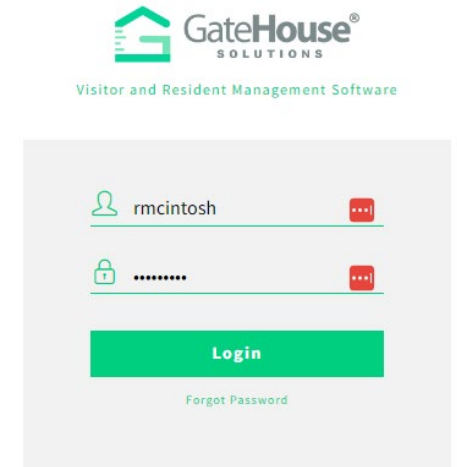
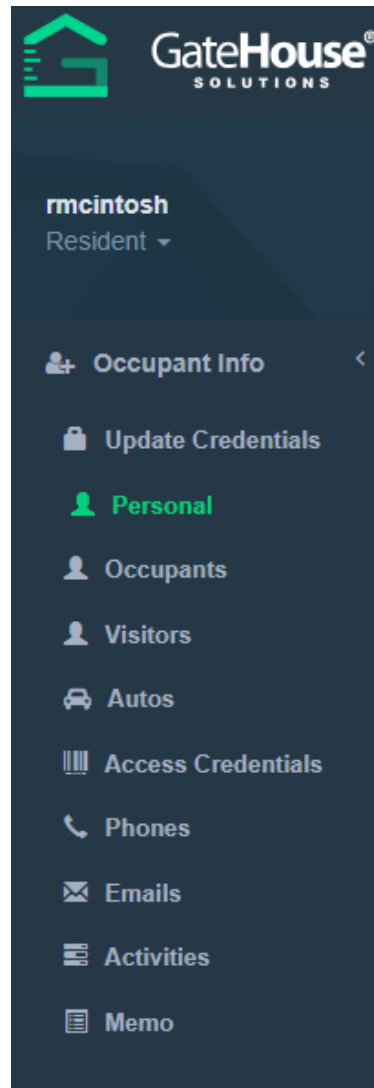


IMPROVEMENTS COMPLETED



TIKI BAR IMPROVEMENTS

SOFTWARE UPGRADES — RESIDENT WEB PORTAL



GateHouse® Solutions Visitor and Resident Management

The GateHouse® Solutions Visitor and Resident Management software's extensive collection of modules provides complete flexibility in configuring a system for any community's needs and can be added at any time as your community grows. Software Modules can be added at any time. Below are some of our popular Software Modules. Please contact your Property Manager if there are any software modules that are a good fit for your community.



Caller Id



Visitor Pass



Visitor Notification



Visitor E-Pass

[Learn More](#)

SOFTWARE
UPGRADES
-
VISITOR
ELECTRONIC PASS

--SCAN FOR GATE ACCESS--

GateHouse
Grand Haven CDD



VISITOR E-PASS

VISITOR: Stepniak Vanessa

ISSUED: 02/01/2023

EXPIRES: 02/01/2023

RESIDENT: McIntosh Ryan

ADDRESS: 15491 SW 12th Street

Powered by GateHouse® Solutions

SOFTWARE UPGRADES

-

CELLPHONES ALLOWED IN THE CALLBOXES

Tele Entry



Add Tele Entry

Find Tele Entry

Search

Show Entries

Directory Name	Directory Number	Entry Code	aac	Phone	Account		
1 CELL	1888		386	447-1888	GH NORTH GATE		
2 PHONES	1888		386	447-1888	CROSSINGS		
3 ALLOWED	1888		386	447-1888	GH MAIN GATE		
4 IN	1888		386	447-1888	GH SOUTH GATE		
5 CALLBOXES	1888		386	447-1888	WILD OAKS		



THANK YOU!